

Bullet Camera Quick Start Guide

Safety Requirements

Installation Requirements

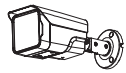
- Comply with all local electrical safety codes and standards when operating the product.
- Check if the power supply is correct before operating the product.
 - Follow the electrical requirements to power the product. Requirements for selecting a power adapter:
 - The power supply must conform to the IEC 60950-1 and IEC 62368-1 standards.
 - The voltage must meet SELV (Safety Extra Low Voltage) requirements and not exceed ES-1 standards.
 - The power supply must meet LPS requirements and not exceed PS2.
 - We recommend using the power adapter provided with the product.
 - The power supply requirements (such as rated voltage) are subject to the product label.
- Do not connect the product to more than two power supplies unless otherwise specified.
- The product must be installed in a location only professionals can access to avoid the risk of non-professionals becoming injured from accessing the area while the product is in operation. Professionals must have full knowledge of the safeguards and risks when using the product.

Operation Requirements

- Do not open the cover when the product is powered on.
- Do not touch the heat dissipation component of the product.

Packing List

Check the items below to make sure every installation part is included and in proper condition.



1 x Bullet Camera



2 x Product Literature



1 x L-Shaped Wrench



1 x Mounting Template



1 x Package of Screws



1 x Package of Mounting Components



1 x Power Drill (Not Included)



1 x Roll of Electrical Tape (Not Included)



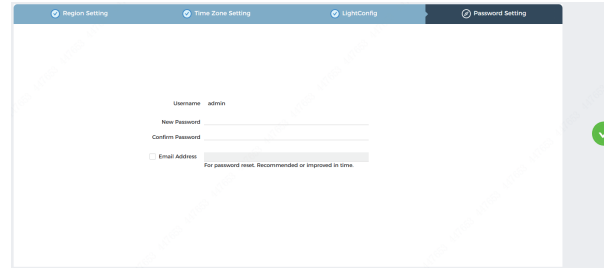
1 x MicroSD Card (Not Included)



1 x Phillips Head Screwdriver (Not Included)

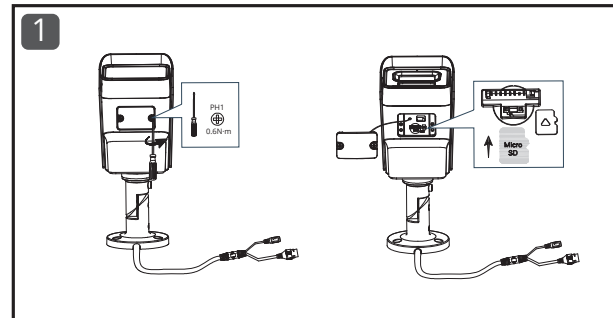
Device Initialization

- 1 Enter the camera's IP address in the browser address bar. Chrome and Firefox are recommended.
- 2 Follow the on-screen instructions to complete the initialization process.

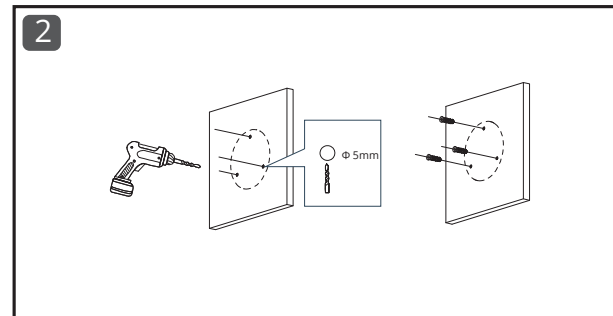


Installation Steps

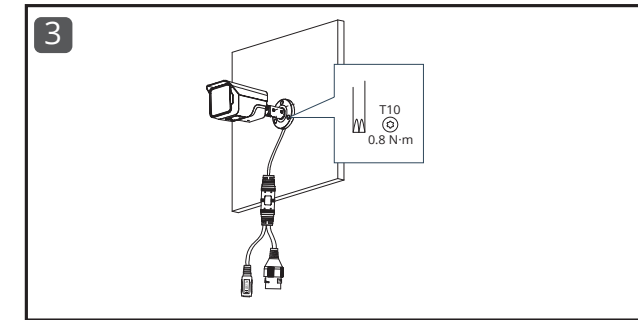
Remove the cover on top of the camera with the screwdriver and insert your MicroSD card.



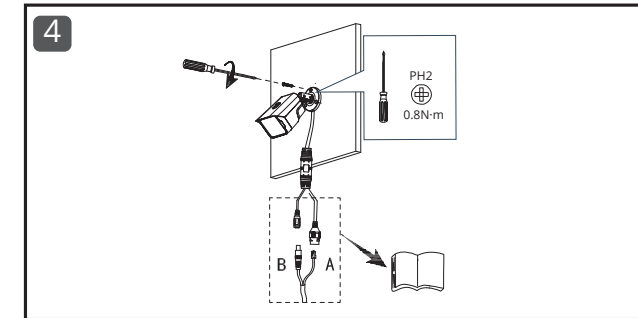
Position the camera using the mounting plate, drill the installation holes, and screw the plate into place. For conduit installations, please only do steps 3 & 4, and skip step 5 & 6. For wall installations, proceed immediately to step 5.



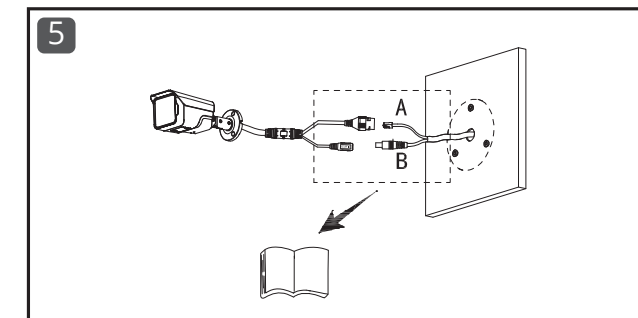
For conduit installations, feed the camera cables through the opening at the bottom of the mounting plate and loosen the screw closest to the mounting plate to prepare for positioning.



For conduit installations, secure the camera to the mounting plate. Connect the wiring. See optional procedures A and B to create a more secure attachment for these components.

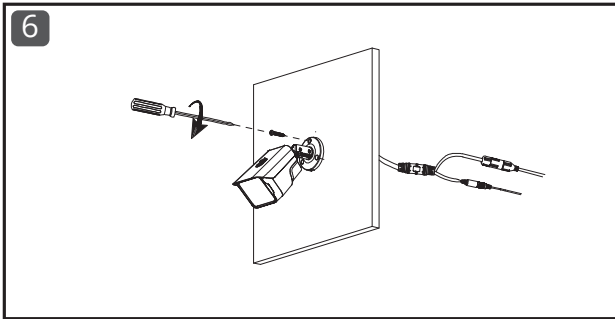


For wall installations, feed the cables through an opening in the wall and connect. See optional procedures A and B to create a more secure attachment for these components.

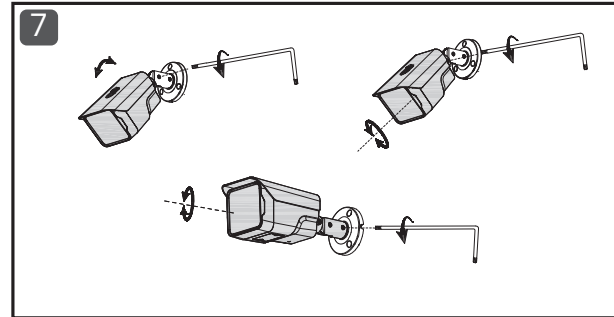


Bullet Camera Quick Start Guide

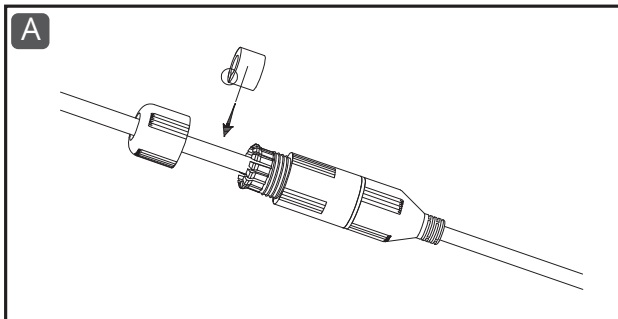
For wall installations, screw the camera into place.



Position and secure the camera at the desired angle using the L-shaped Allen wrench. The camera can be moved up and down and rotated.



Install a protective cover on the cap of the PoE connector before connecting the two wires.



Wrap the camera's power cable with electrical tape to ensure a secure connection and protect it from water.

